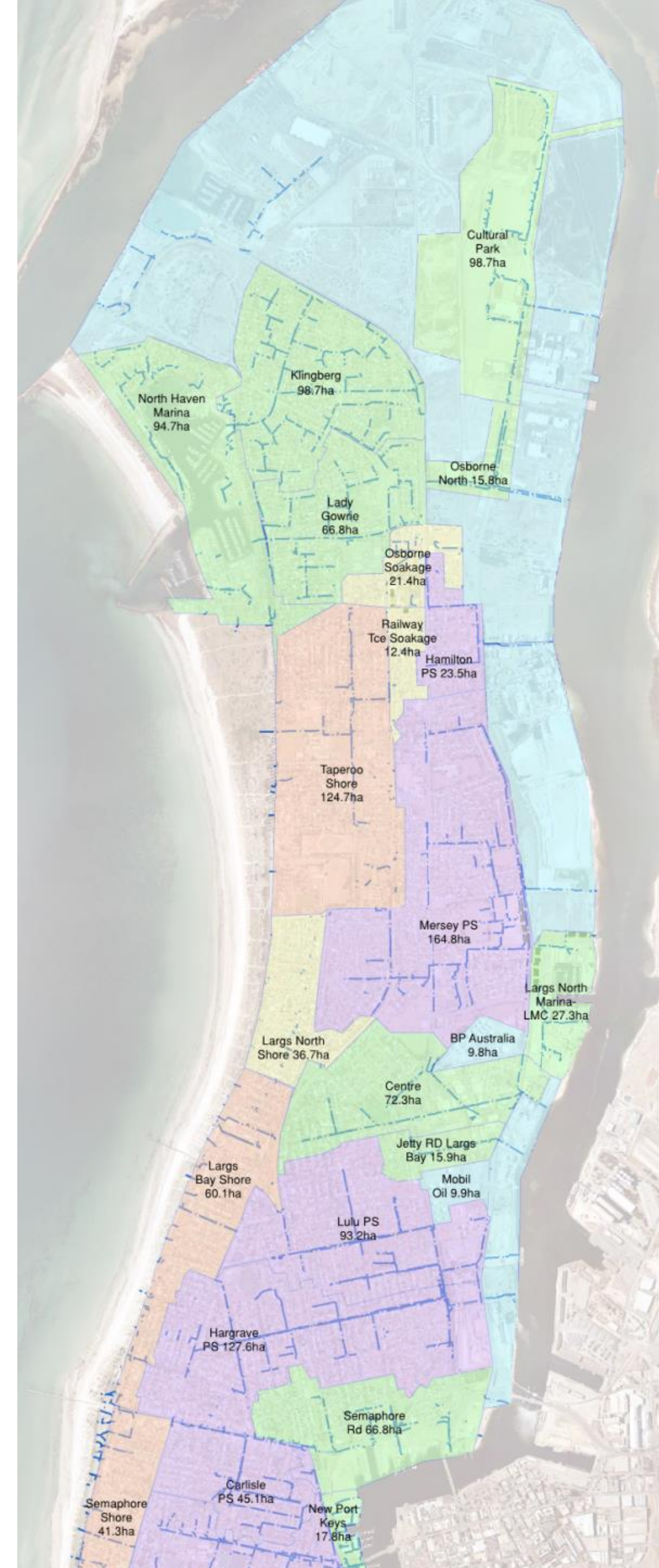


Water Quality in Port Adelaide Enfield Council



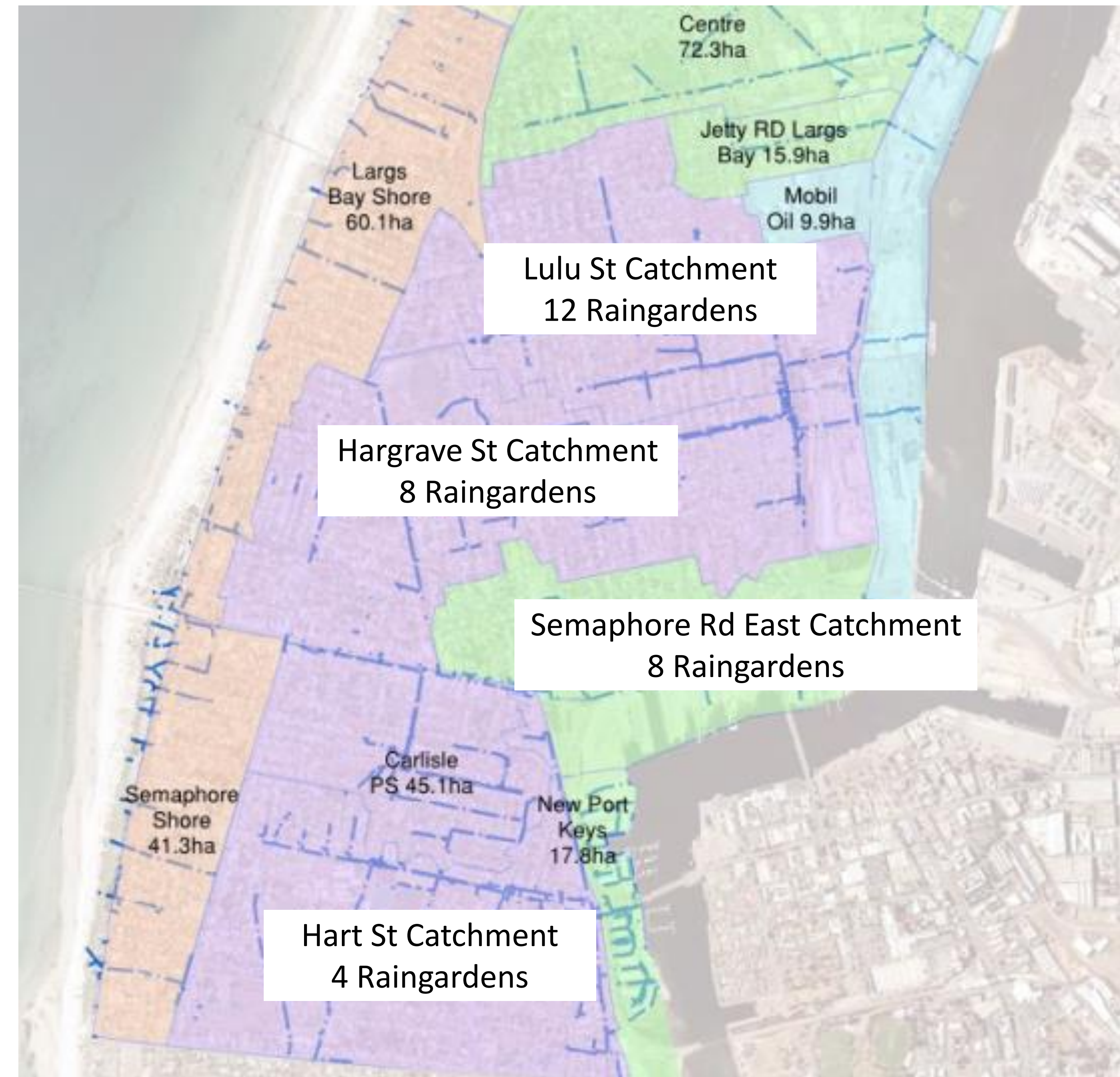
Stormwater Quality Planning on the Peninsula

- As a part of the Lefevre Peninsula SMP it was identified that raingardens could be used as a tool to improve water quality.
- Thirty two raingardens have been proposed across the Peninsula.



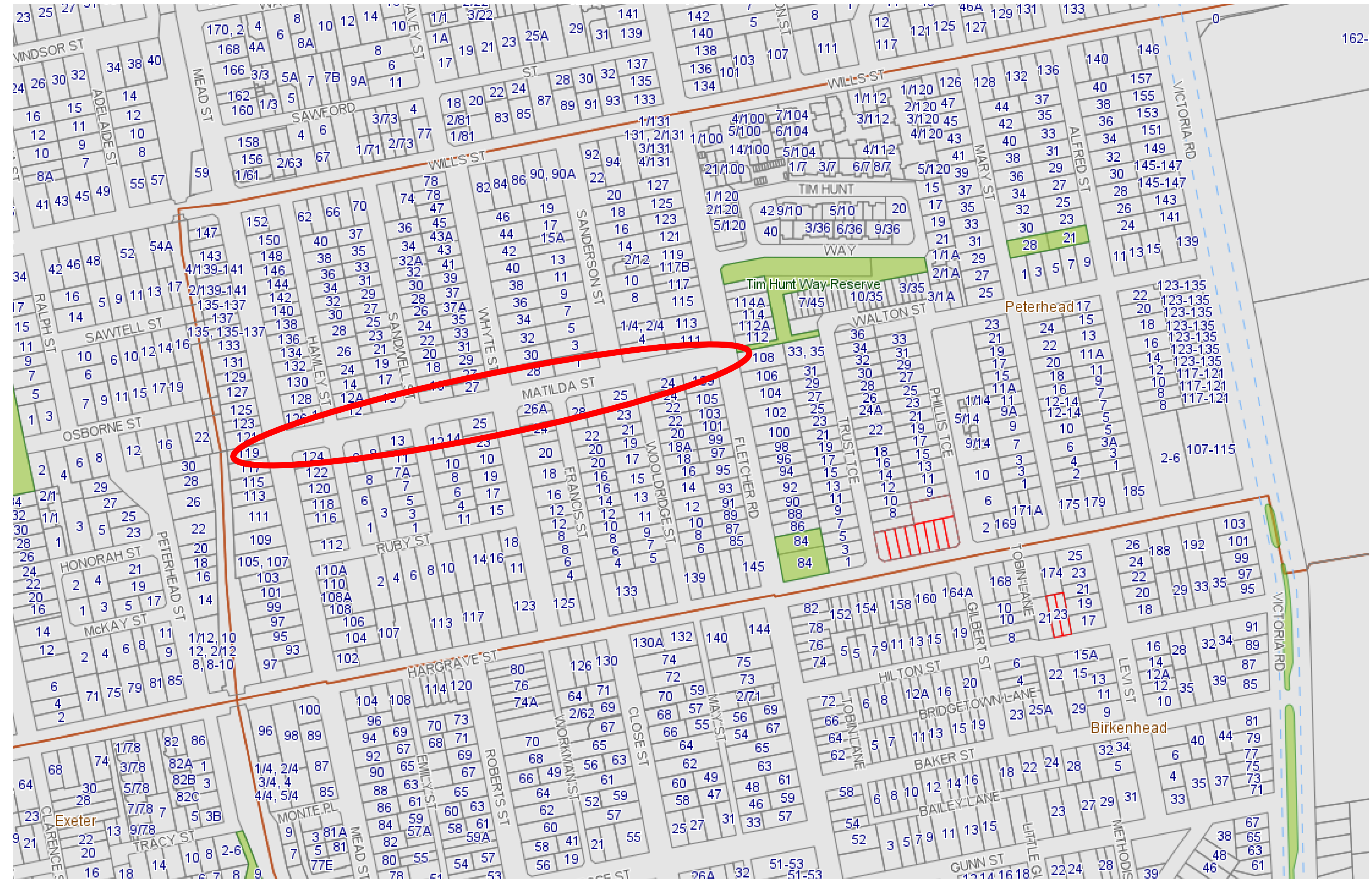
Stormwater Quality Planning on the Peninsula

- MUSIC modelling was used to determine how many raingardens are required in each of the catchments



Stormwater Quality Planning on the Peninsula

- Opportunities for Raingardens to be installed in wider streets
 - Provide stormwater treatment
 - Provide traffic calming benefits



Matilda St Raingarden

- Why Matilda St???
- Wide street
- Minimal driveways
- Minimal houses facing street
- Stormwater system that can accept overflow from raingarden



Matilda St Raingarden

What was involved in the planning and design process?

- Identified the catchments
- Identified the location and depth of stormwater infrastructure
- Potential size of raingardens that are able to be accommodated
- Analysed groundwater depth
- Service location
- Location of driveways
- Parking in the street



Matilda St Raingarden



Potential Rain Garden Locations

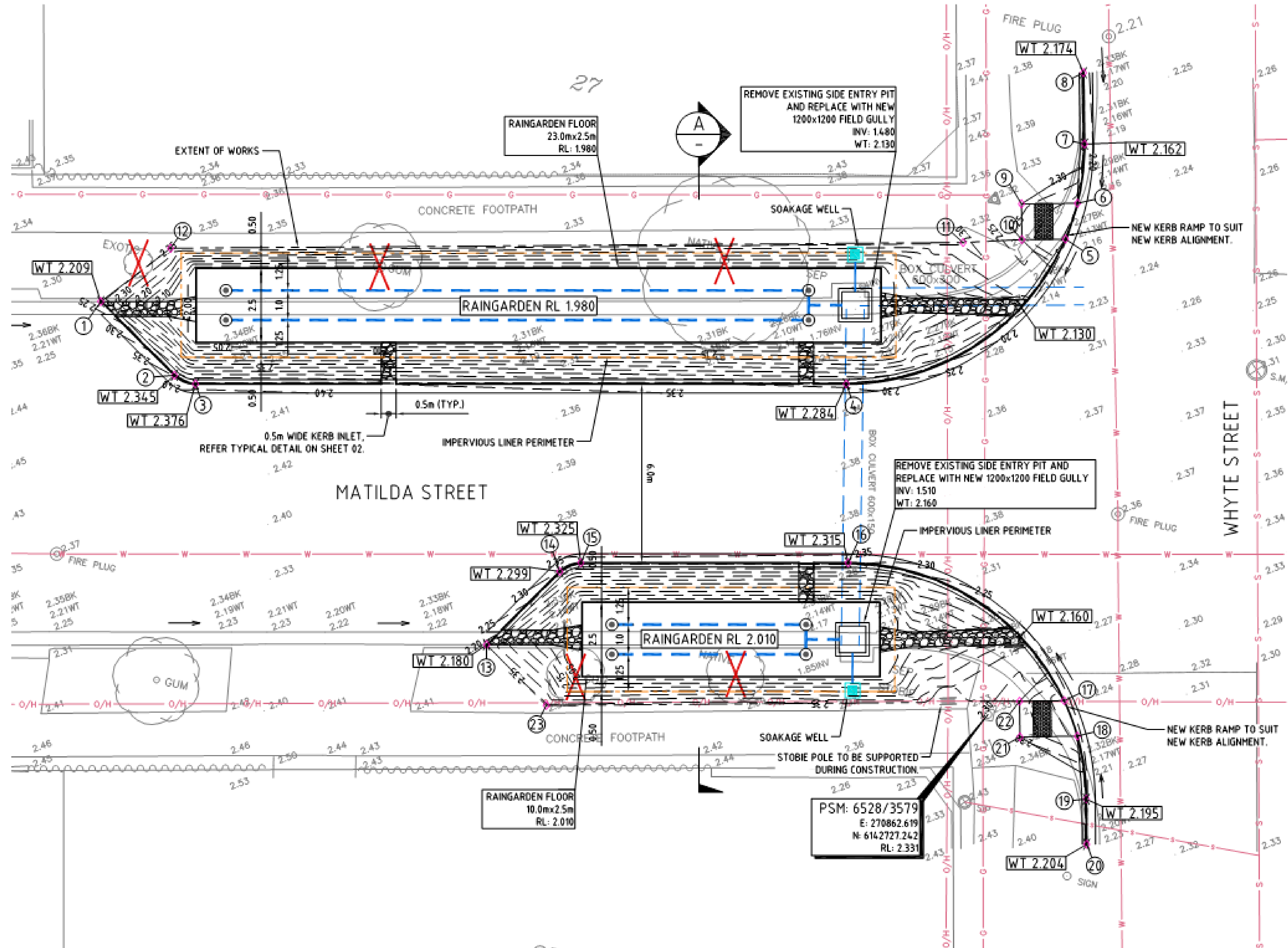
Matilda St Raingarden

Reasons to select this location:

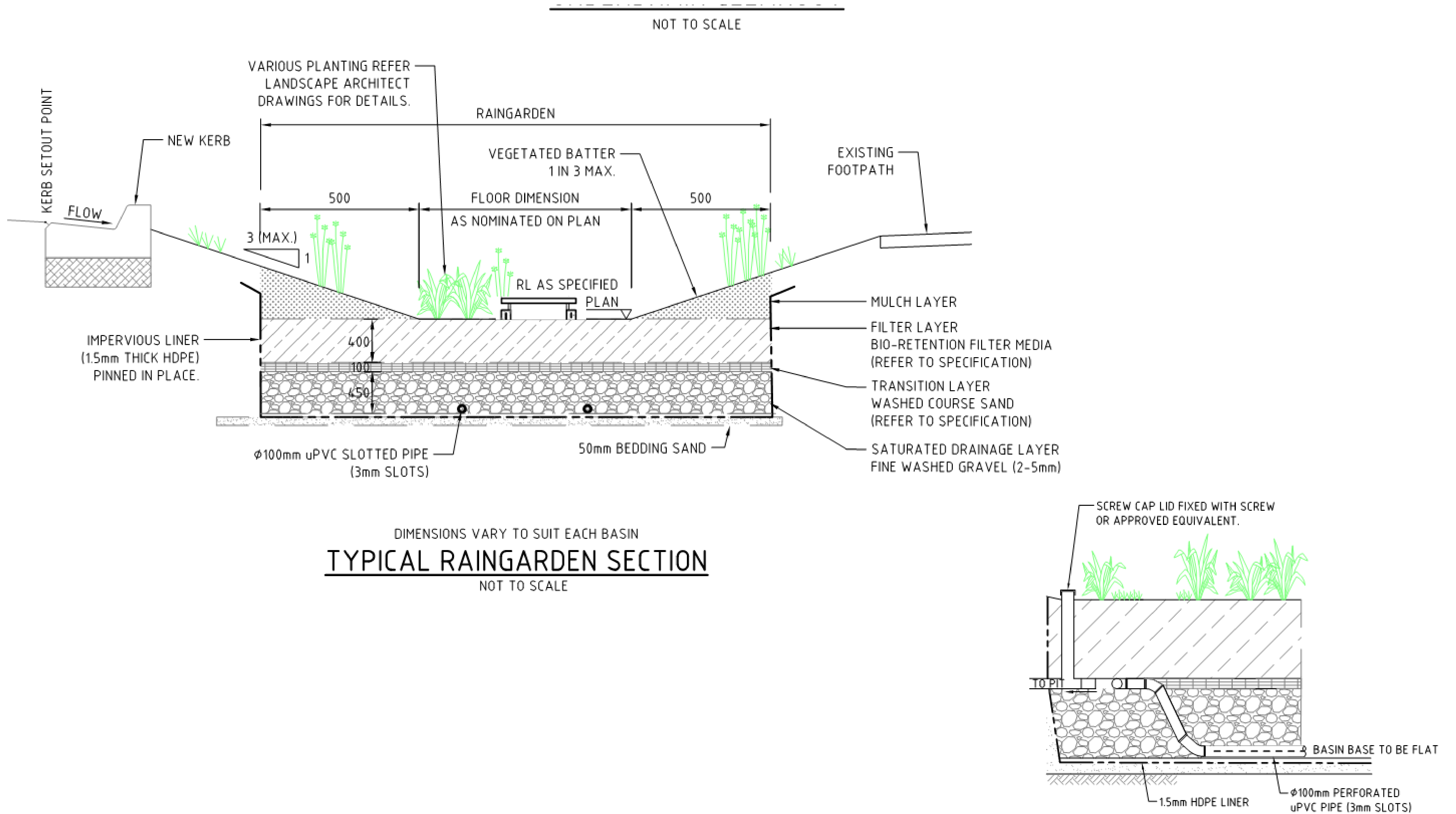
- The largest sub catchment
- Located the furthest upstream reducing impacts of construction contamination
- Strategic location to provide traffic calming benefits



Matilda St Raingarden

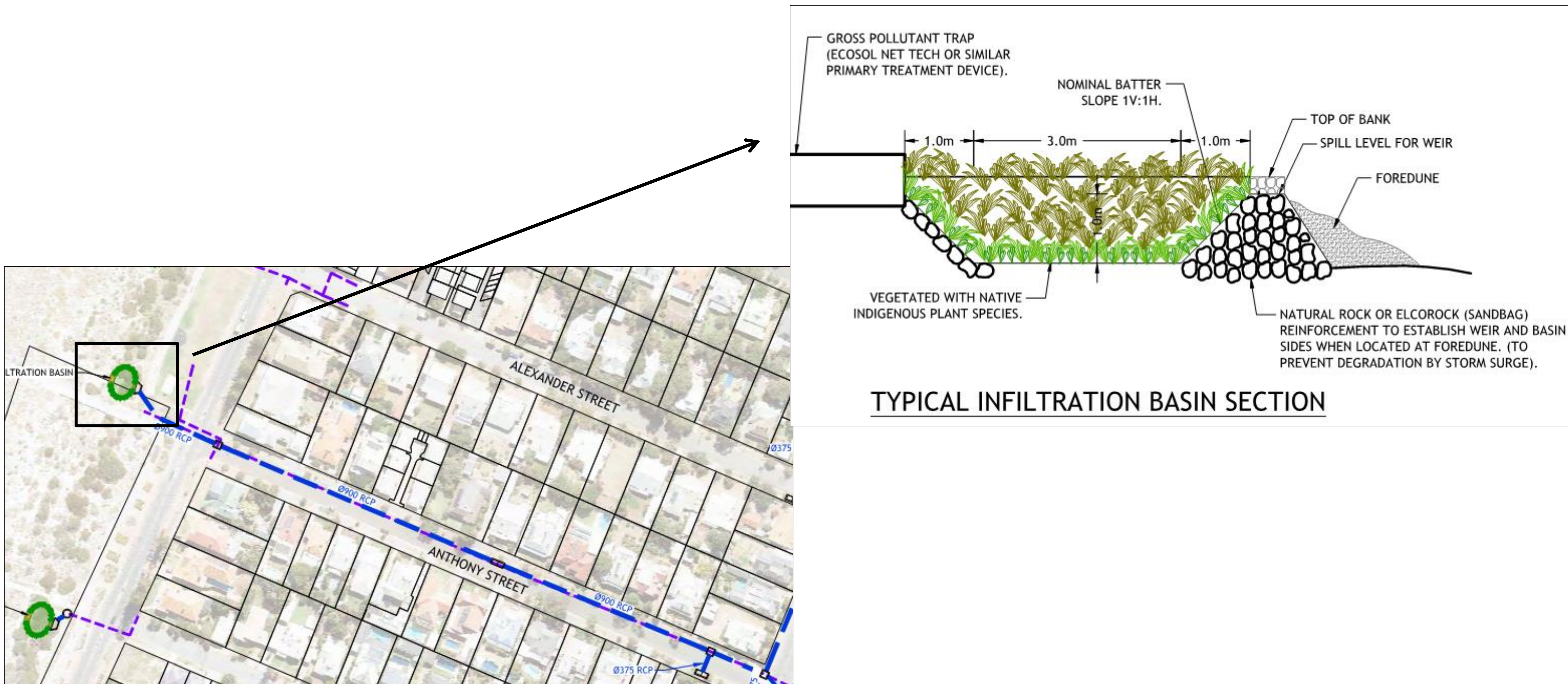


Matilda St Raingarden



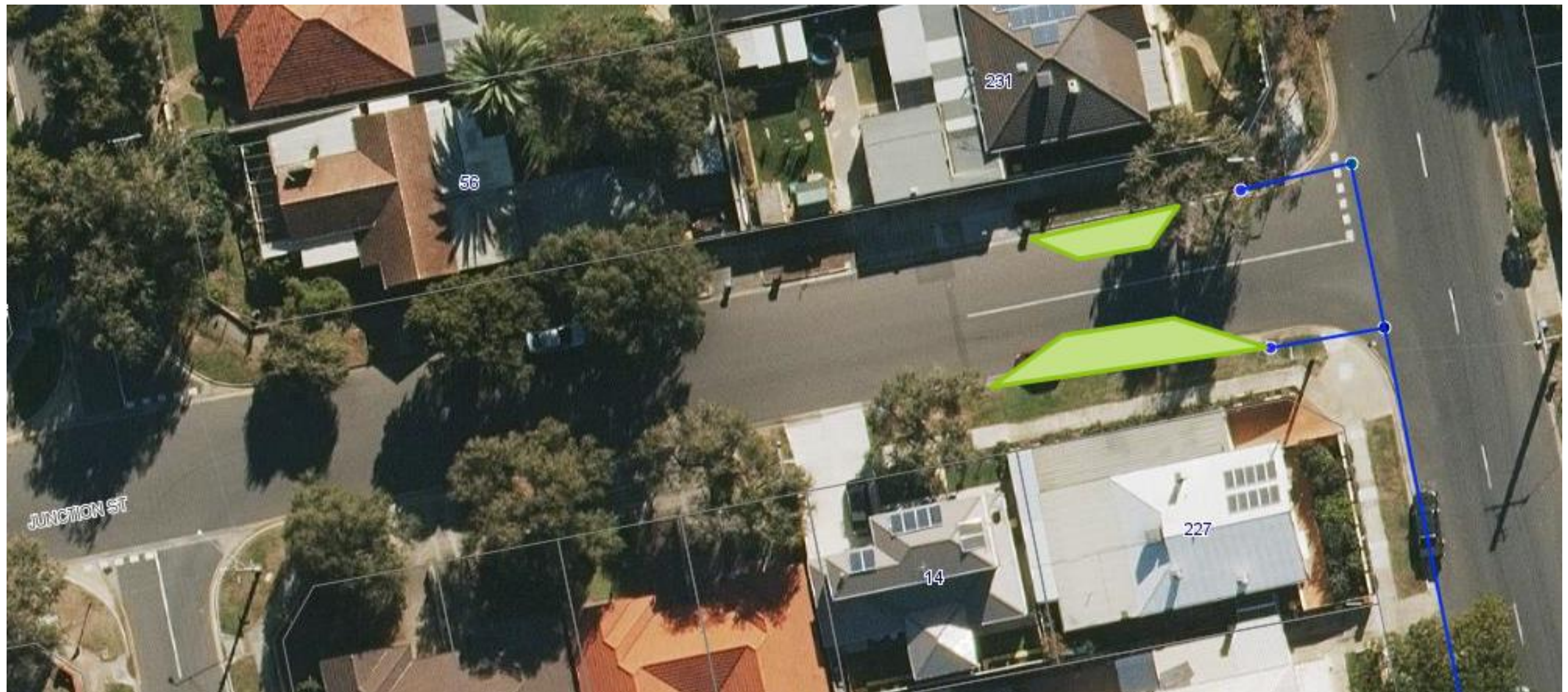
Other WQ projects this FY

- Anthony St, Largs Bay – Detailed design of upgraded dune outlet



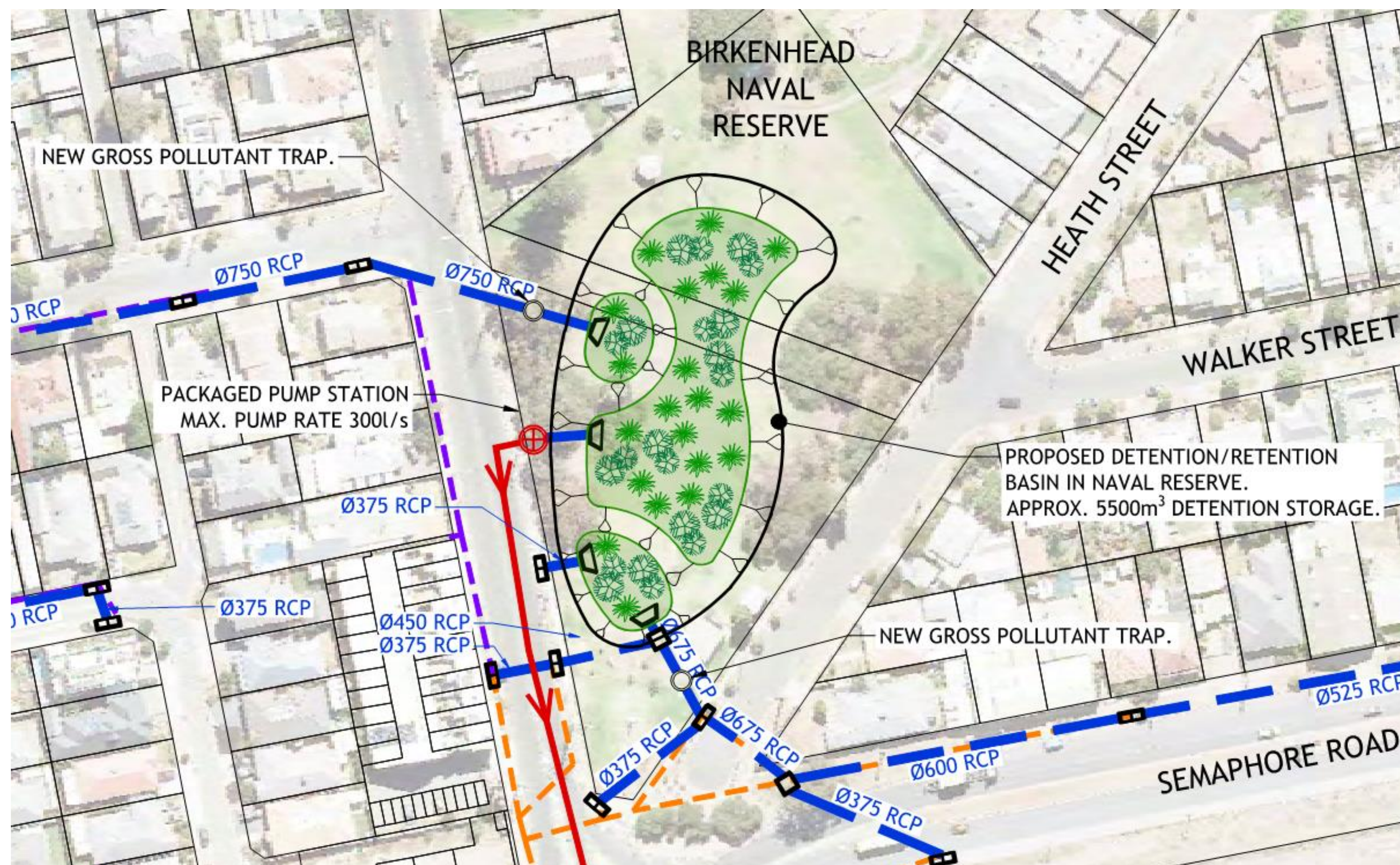
Other WQ projects this FY

- Junction St, Largs Bay – Potential Raingarden location



Other WQ projects this FY

- Detailed design of Naval basin (which includes a low flow water quality element)



Other WQ projects this FY

- Detailed design of the expansion of the Kolapore Ave basin



How can you help improve water quality

Don't:

- Sweep/wash leaves into the roadway
- Over fertilise your garden
- Wash your car and allow the water to drain in to the roadway



How can you help improve water quality

Do:

- Clean up leaves and sediments around your home (eg driveway)
- Regularly clean gutters
- Learn about your stormwater system
- Reuse stormwater on your property
- Do report excessive leaves and sediments in the street to Council (via My local services app or Councils website)

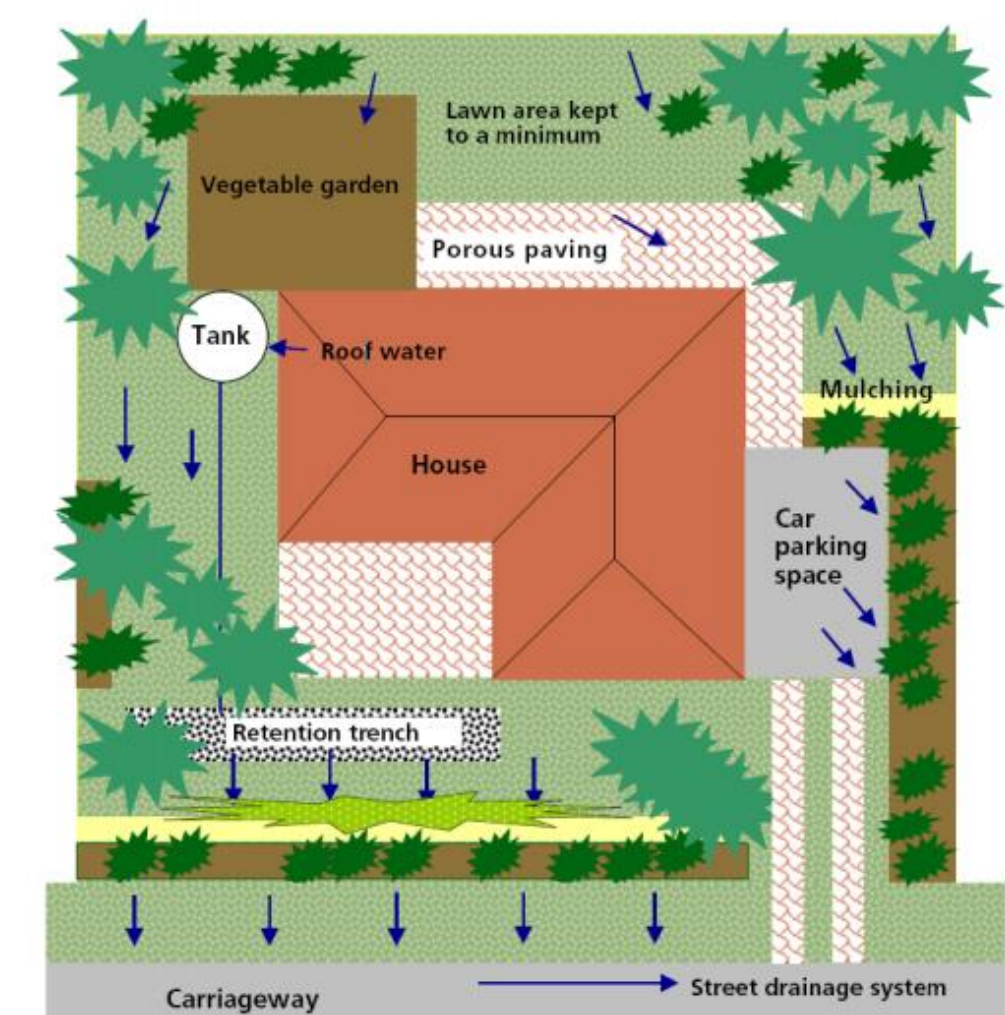
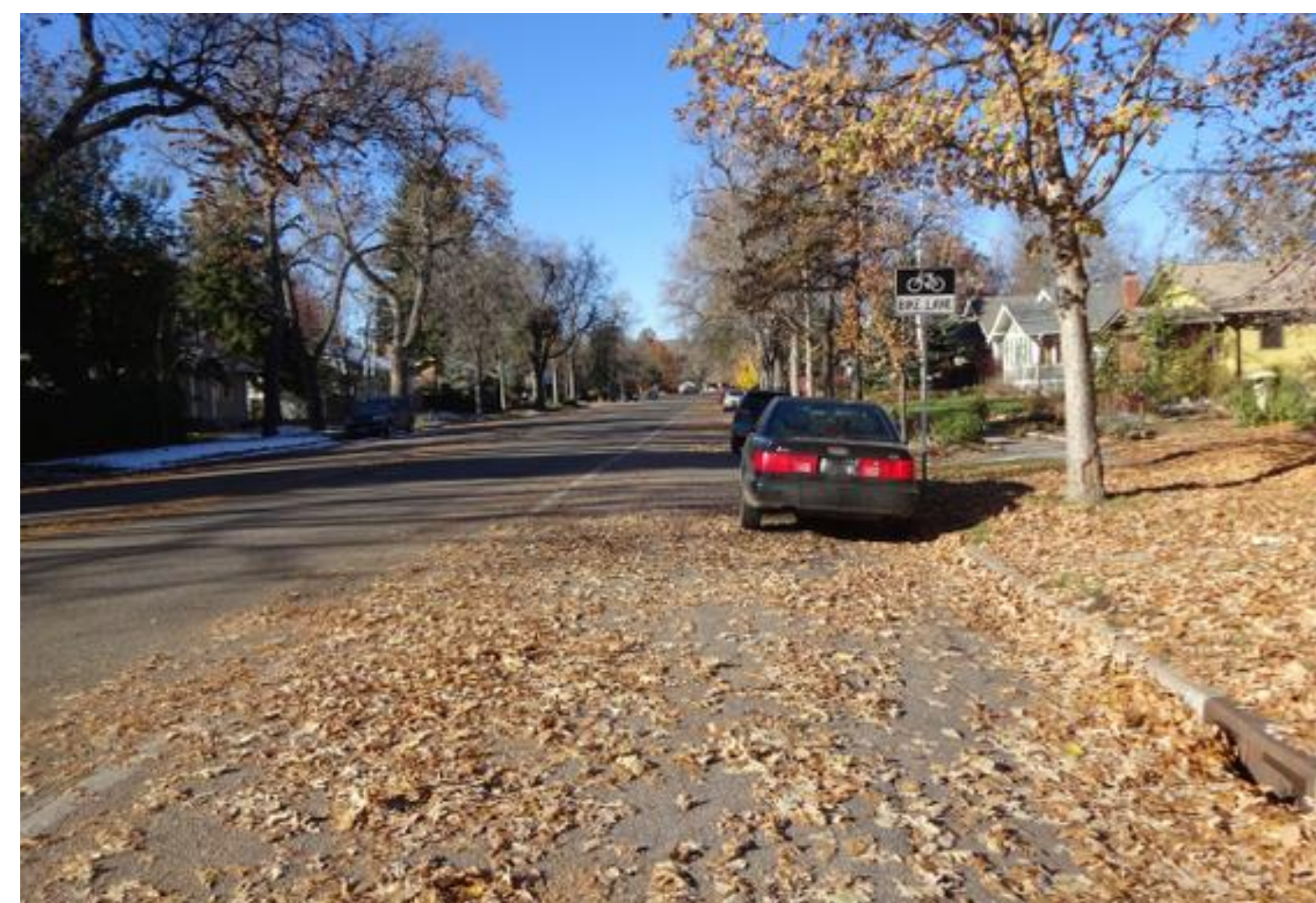


Figure 2.1 Example of an Overall WSUD Strategy for a Typical Suburban Dwelling
Source: LHC CREMS (2002)